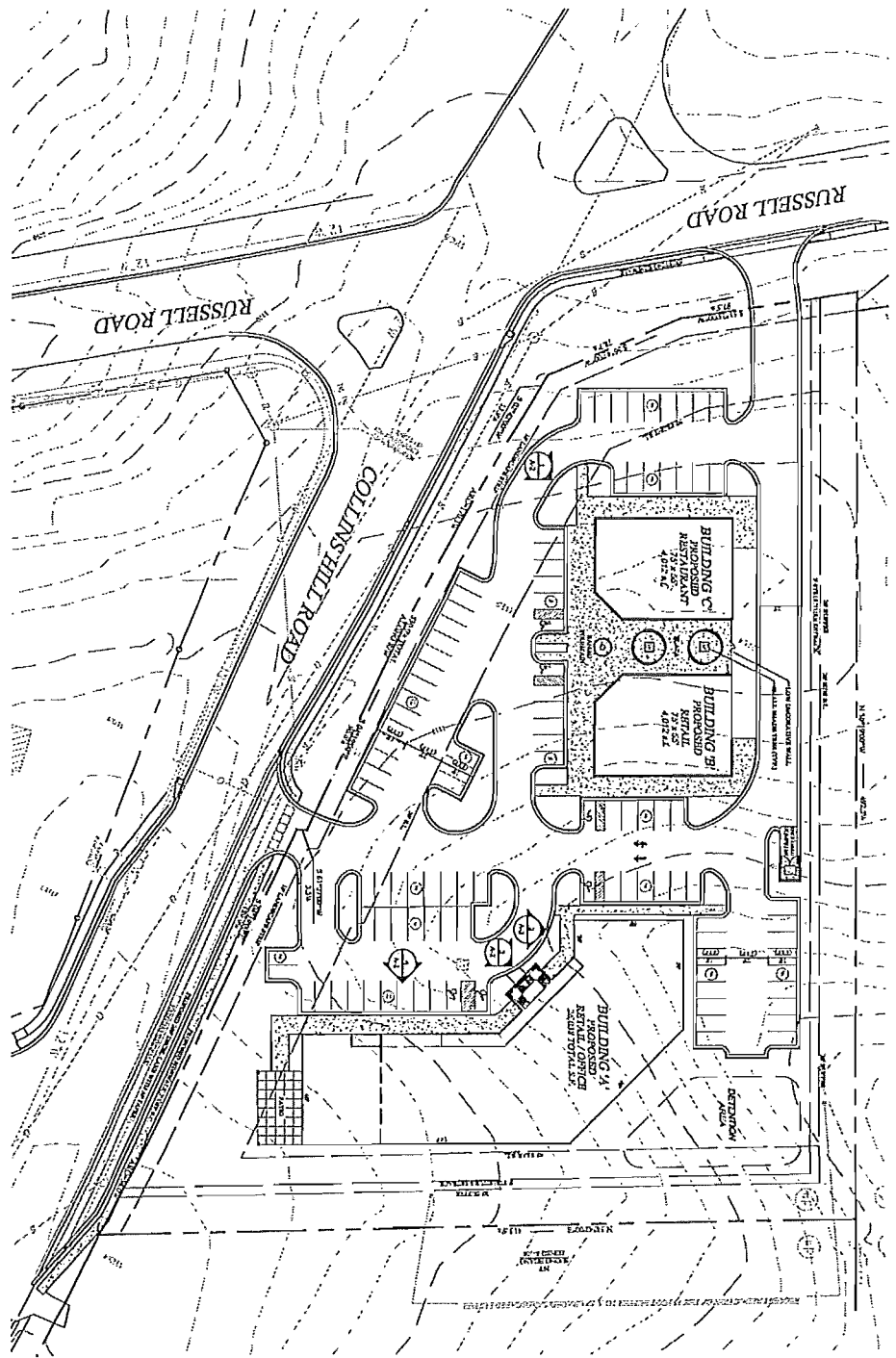


SCALE: 1"=20'
 PROJECT # 2008-01

DATE: 01/02/2008 10:00 AM
 DRAWN BY: J. HARRIS

PROJECT: COLLINS HILL RETAIL CENTER

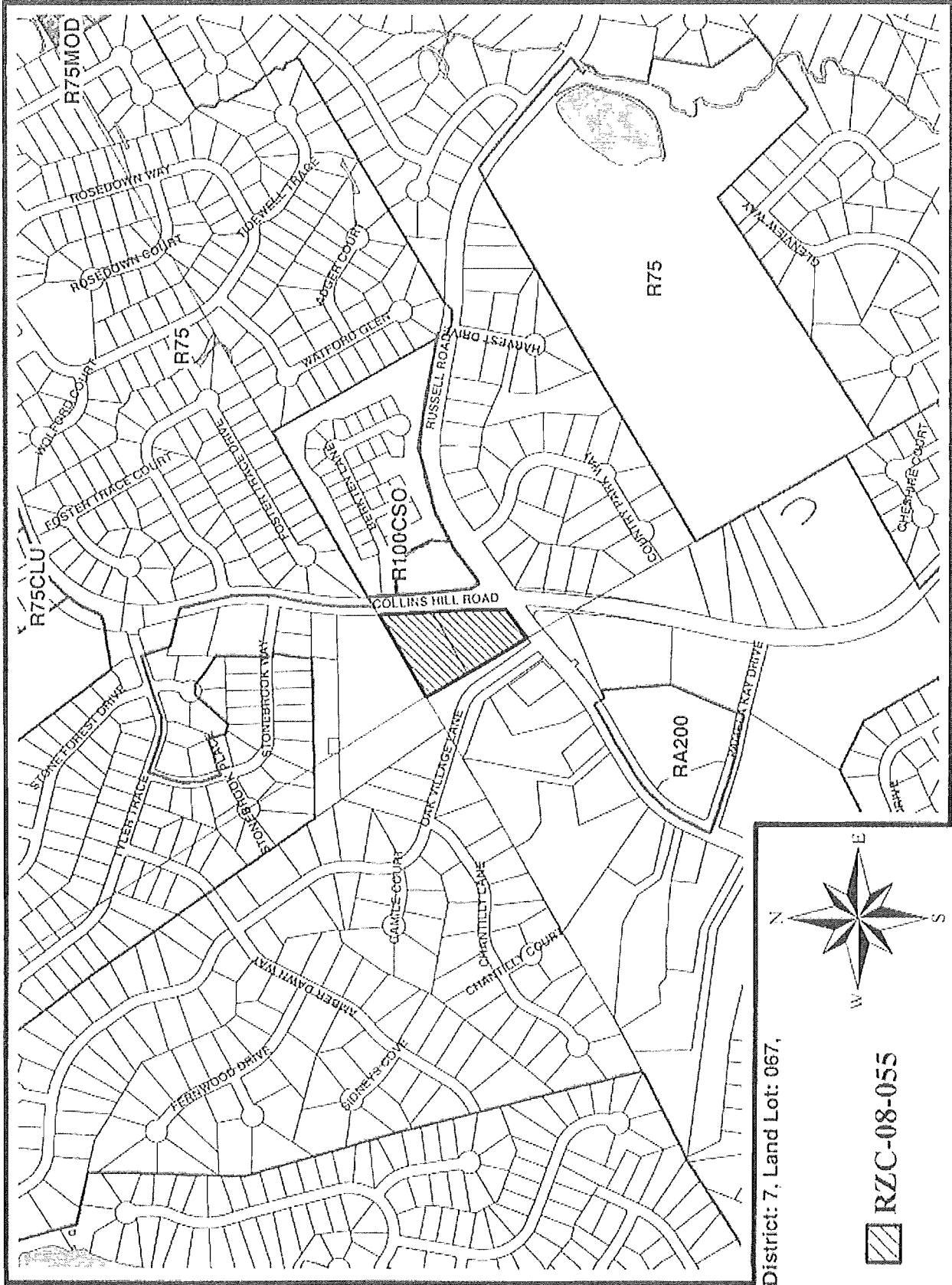


CONCEPT 'A' RETAIL SITE PLAN COLLINS HILL RETAIL CENTER

GWINNETT COUNTY, GEORGIA
 Provided for:
 CORRIDOR PROPERTY GROUP
 January 2, 2008

SITE NOTES

EXISTING ZONING:	R-100
PROPOSED ZONING:	C-2
EXISTING AREA:	41,231 sq ft
BUILDING INFO:	
BUILDING A:	
OFFICE (1st FLOOR):	11,298 sq ft
RETAIL (1st FLOOR):	14,148 sq ft
BUILDING B:	
RETAIL:	14,148 sq ft
BUILDING C:	
RESTAURANT:	4,974 sq ft
TOTAL BUILDING SF:	30,420 sq ft
PARKING REQUIREMENTS:	64 SPACES
PROVIDED:	64 SPACES
NET DIFFERENCE:	0 SPACES
MIN. SPACES REQUIRED BY SIGNAGE:	0 SPACES
TOTAL PROVIDING SPACES PROVIDED:	64 SPACES



District 7, Land Lot: 067,

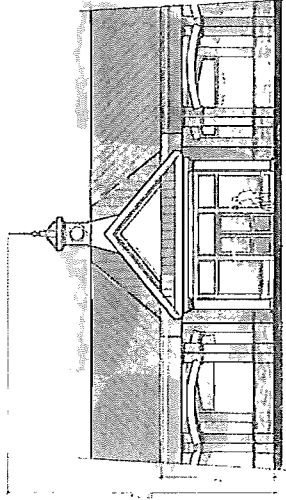
 RZC-08-055

CONCEPTUAL RETAIL ELEVATIONS
**COLLINS HILL
 RETAIL CENTER**

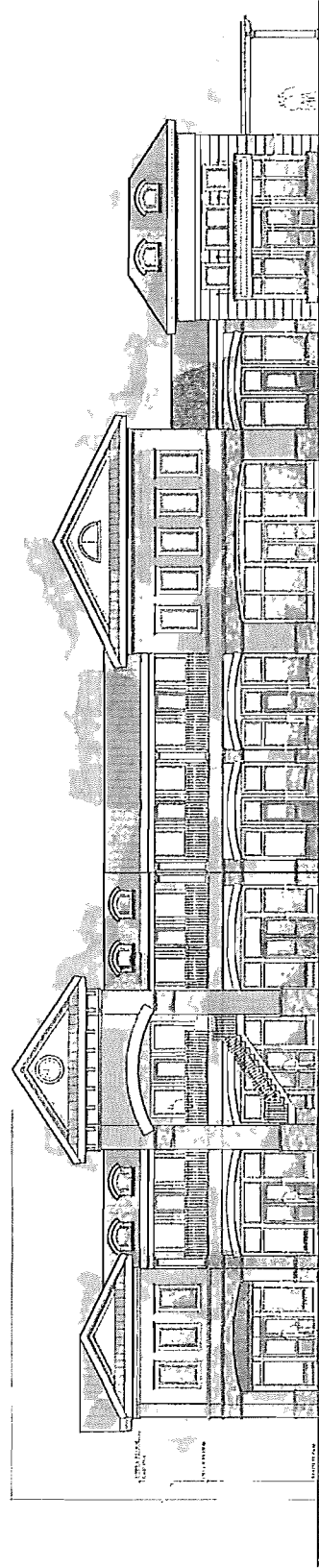
GWINNETT COUNTY, GEORGIA

Provided for:
 CORRIDOR PROPERTY GROUP

December 4, 2007



1 RETAIL STOREFRONT ELEVATION
 20' x 10' x 10'



2 RETAIL OFFICE BUILDING - FRONT ELEVATION
 200' x 100' x 40'

R