

## WHY IS GRAVITY SO WEAK?

**Shantilal G. Goradia**

*Gravity Research Institute, Inc.  
3003 Royal Huntsman Court, South Bend, Indiana 46637, USA  
[sg@gravityresearchinstitute.org](mailto:sg@gravityresearchinstitute.org)*

Why is gravity weak? Gravity is plagued with this and many other questions. After decades of exhausting work we do not have a clear answer. In view of this fact it will be shown in the following pages that there are reasons for thinking that gravity is just a composite force consisting of the long-range manifestations of short range nuclear forces that are too tiny to be measured at intermediate or long ranges by particle colliders. This is consistent with Einstein's proposal in 1919.

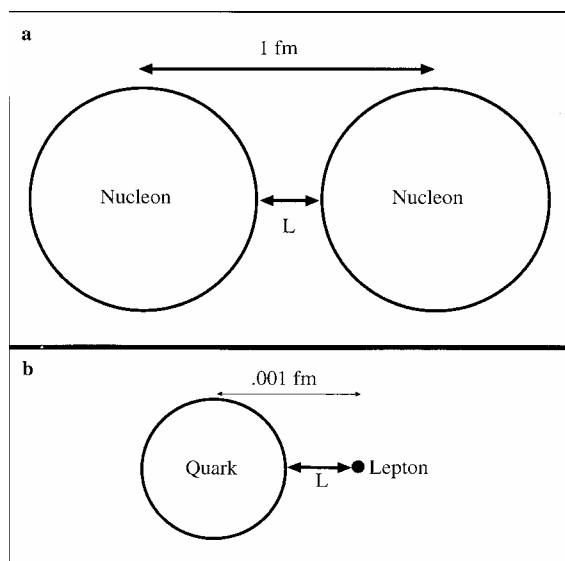
*Keywords: Strong force, gravitation, quantum connection.*

### INTRODUCTION

I am postulating that elementary particles have a quantum mouth (Planck size) that radiates a flux density of gravitons as a function of the mass of the particle. Nucleons are not hard balls like light bulbs radiating photons challenging Newtonian concepts of centers and surfaces. The hardball analogy is implicit in coupling constants that compare strong force relative to gravity. The radiating mouth is not localized at the center like the filament of a light bulb with a hard surface. Substituting the hard glass bulb surface with flexible plastic surface would clearly make the interacting mouths approach each other as close as possible, but no less than the quantum limit of Planck length. Therefore, surface distance in Newtonian gravity would be a close approximation and fits Feynman's road map [1] for a deeper investigation. The explanation of the quantum mouth in terms of the exit mouth of a quantum wormhole is a detail that comes close to my ontological postulation.

### MODIFICATION OF THE INVERSE SQUARE LAW

As an example, for two coupled nucleons (Figure 1a.), I chose the Planck length



**Figure 1.** Pictorial view of gravitational interaction showing surface and center separations (not to scale).

$L$  is the Planck length, 10-20 fm. [a] Two nucleons at minimum separation. [b] A quark and a lepton, also at minimum separation. The standard inverse square law would use the center-to-center distances to calculate the force between the particles; using the surface-to-surface distance yields a much stronger force for these separations, equal to the relative strengths of the strong and weak nuclear forces respectively.

$L = (\text{Gh}/c^3)^{0.5}$  as the surface separation, as it is the minimum possible spatial distance that makes any sense in physics.

Assuming zero separation distance would imply that the two particles are joined to form one particle, losing their distinctions as separate particles. The diameter of the nucleon is about 1 fm ( $10^{-15}$  meters). The Newtonian gravitational force is then

$$F_N = Gm^2 / D^2 \quad (1)$$

where  $D$  is the center-to-center distance,  $\sim 1$  fm. If we select the surface-to-surface separation instead, the force would become

$$F_p = Gm^2 / d^2 \quad (2)$$

with  $d = L = 10^{-20}$  fm. The ratio of these two forces is

$$\frac{F_p}{F_N} = \frac{D^2}{d^2} = 10^{40} \quad (3)$$

which is also the strength of the proposed gravity relative to Newtonian gravity. As the nucleons are separated,  $D/d$  shrinks, and  $F_p$  rapidly approaches

$F_N$ . Mathematically,

$$\lim_{D \rightarrow \infty} \frac{D}{d} = 1 \quad (4)$$

A similar analysis can be made of the quark-lepton interaction (Figure 1b.).

Nucleons are responsible for over 99 percent of the gravity of an atom, therefore they are the primary focus of this paper. For nucleons, I recover Newtonian gravity at practically 1000 fm. This modification yields a force with high intensity at short range, rapidly falling off to a very low intensity at long range. A plot of the potential shows no discrete drop [2, 3].

Einstein, in a paper written in 1919, attempted to demonstrate that his gravitational fields play an important role in the structure and stability of elementary particles. His hypothesis was not accepted because of gravity's extreme weakness [4]. The paper's abstract says: "Neither the Newtonian nor the relativistic theory of gravitation has so far led to any advance in the theory of the constituent of matter. In view of this fact it will be shown in the following pages that there are reasons for thinking that the elementary formations which go to make up the atom are held together by gravitational forces [5]."

While Einstein's attempt is worth mentioning, it is not the foundation of my theory. Einstein could be wrong, but it seems he may not be. "It has been proposed that the gravitational constant inside a hadron is very large,  $\sim 10^{38}$  times the Newtonian  $G$ " [4]. This "strong gravity" inside the hadron is similar to my proposed modification, but in my

modification, instead of needing to change  $G$  itself, I change the distance measurement and get the same result. The variation of  $G$  is not a necessary condition for deriving the coupling constant per my theory. The short range forces are weakened at long range by a high order of magnitude. This makes other attributes of the short range forces, infinitesimal at long range.

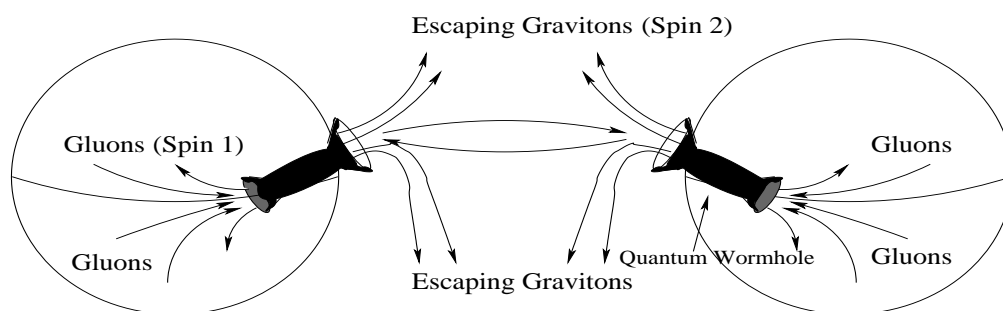
One may question the mathematically simple application of the Planck scale to a problem where the relevant distances seem to be fm. Frank Wilczek has written a series of articles [6], explaining how these scales can be reconciled and has provided responses. While this may seem simplistic, it seems to be mathematically valid, and frequently significant problems can be solved simply in the end, as also illustrated by Morris and Thorne [7]. Complexity in physics lies in the abstraction of simplicity. Classical centers of shapes and therefore surfaces, though used here only for intuitive reasoning are invoked in nuclear coupling constants by implicit comparison to Newtonian gravity and in other descriptions in modern physics. My modification is very consistent and therefore suggestive, however it does not reconcile the fact that nucleons overlap. Thanks are due to Gerald 't Hooft for this comment. Quantum wormholes, as currently theorized, may resolve this issue and give a mathematical foundation to my model. If quantum wormholes do not resolve the issue, we face a challenge to investigate some other verifiable quantum entity to explain this phenomenon.

## QUANTUM WORMHOLE CONNECTION

I postulate that each nucleon has a quantum mouth, potentially matching the mouth of a quantum wormhole. The existence of quantum wormholes was examined by Visser [8]. The wormhole's mouth then represents the entire mass of the particle and propagates its  $1/r$  potential to the rest of the universe. All gravitational interactions become interactions between these wormholes. Radiation by nucleons would consist of energy being emitted by the mouth of the wormhole. This would justify a quantum source of gravity. The mouth emitting the gravitational radiations does not have to be at the surface, allowing the nucleons to overlap. This may sound like a radical approach, but it is not. The direction of my proposal coincides with that in the particle related article by Einstein and Rosen entitled "The Particle Problem in the General Theory of Relativity", introducing what is now known as Einstein-Rosen bridges [9]. The abundance of Planck-length size wormholes required could have evolved from perturbations in the initial big-bang density.

Stable wormholes require "exotic", negative energy matter. "... it is not possible to rule out the existence of such material; and quantum field theory gives tantalizing hints

that such material might, if fact, be possible [7]." The stability of wormholes is on firmer grounds now. "...the theoretical analysis of Lorentzian wormholes is "merely" an extension of *known physics* – no new physical principle or fundamentally new physical theories are involved [10]." Literature search reveals no detection of any central force within nucleons, raising a question about the existence of gravitons within nucleons. Figure 2. shows the mental picture of the graviton flux from nucleons with some background data.



**Figure 2.** Mental image nuclear interactions via quantum wormholes.

The gravitation flux would be proportional to the mass of the interacting particle, yielding couplings of  $10^{40}$  for nucleons and  $10^{34}$  for lighter quark-lepton pairs.

Richard Feynman seems to have investigated transfusion of two particles into gravitons [11], but not in this context. There is a sense in which two bosons make a boson [12]. One may question the hypothetical graviton or gluon. Since all bosons can occupy the same state, my theory is not challenged by that question. The exclusion principle allows all bosons to occupy the same state. As two fermions approach each other nature must intervene to keep them from occupying the same state. The structure of the quantum space-time is *foamy* [13]. The potential conversion of two gluons into one graviton and vice versa would be debatable. However, such *foamy* structure may give a green light for some other form of a particle mechanism.

There have been cause-relations between wormholes and coupling constants proposed in the past as in the paper titled, "Do Wormholes fix the Constants of Nature?" by S. Hawking[14]. My picture is equivalent to the classical picture of an accretion disc drawing the energy out of a black hole and ejecting a relativistic jet of energy in all directions from the center of the accretion disc.

Some long range forces are potentially simple, cumulative long range manifestations of their short range counter parts and vice versa with their intermediate range

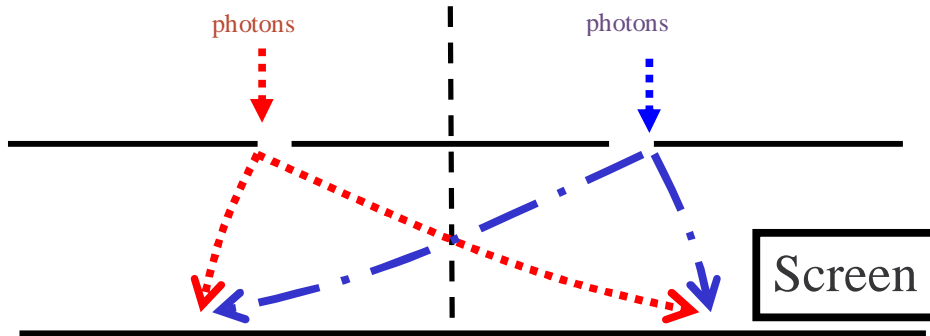
immeasurable by microscopic or macroscopic means. My modification showing the strong gravity as a function of  $D^2$  instead of particle mass (logical function of  $D^3$ ) is consistent with the holographic principle.

The Mach principle may imply that the universe spinning in the reference frame of nucleons may subject the nucleons to some form of gravity, not "residual" force. As long as the observable characteristics of the proposed wormholes are stable, their stability and types are of secondary importance because the coupling constants are averages of observations. The understanding of the coupling constants lies at the heart of our understanding other important issues. "Using the concept of strong gravity, one can show the stability and structure of elementary particles, which could not be achieved by weak gravity" [4]. The sudden decrease in nuclear potential near the surfaces of nucleons may be a result of pion intervention pushing the nucleons apart as needed to stabilize the nucleus against the potential collapse by strong gravity. Pions may not be pulling the nucleons together as originally theorized, they may be pushing them apart. Since pions are observed to be spin-zero and their range matches the size of nuclei, this possibility cannot be ruled out. The following paragraph in recent publication by B. A. Robson [15] gives a historical perspective on this issue.

"In 1954 Yang and Mills, [16] and Shaw [17] attempted to model a field theory of the strong interaction along the same lines as the U(1) gauge theory of the electromagnetic field by introducing the concept of a non-Abelian strong isospin SU(2) gauge theory. In this approach, gauge invariance required the introduction of an isospin triplet ( $W^+$ ,  $W^0$ ,  $W^-$ ) of vector bosons, which were analogues of the photon in electromagnetic theory. On the other hand, these gauge bosons, unlike the photon, were self-interacting, leading to a non-linear field equations and considerable complexity. However gauge invariance required the gauge bosons, like the photons, to be massless, in contradiction with Yukawa's meson theory and the known short-range nature of the strong interaction. In hindsight, this approach failed because the nuclear strong interaction associated with the strong isospin symmetry of pions and nucleons is not a fundamental interaction arising from an SU(2) gauge theory. In the SM, this interaction is now regarded as a "residual" interaction of the strong color force, responsible for binding quarks in hadrons. This latter force is described in terms of a local gauge involving massless gluons." The fifth force is a force in addition to Newtonian gravity noticeable at small distances. My modification explains at least some of the additional force without having to consider it as a fifth force. My theory does away with the need to renormalize gravity, since the value of "r" is never zero. The minimum value of "r" is the Planck length.

**DOUBLE SLIT EXPERIMENT**

Per my theory, in a two-slit experiment (Figure 3.), the network of geodesics downstream of the slits would depend upon whether both slits are open or only one of them is open, not upon the number of slits used for shooting the photons at the same time. The shortest line implied by a geodesic is along curved space-time. My introduction of "strong gravity" at the edge of the slit impacts the curved space-time downstream of the slits and the entire network of geodesics. It does not matter whether the experiment shoots the photons through one slit or both. The screen pattern is a function of the network of geodesics.



**Figure 3.** Depiction of the Double Slit Experiment

As shown, the screen pattern is independent of whether the left, right, or both the slits are used, as long as the slits are open.

**THE UNCERTAINTY PRINCIPLE**

We are the "observers" and the particles are the "observed". The quantum wormholes lie between the two with their attributes of quantum time and quantum energy, potentially impacting the information passing through. It is amazing that the product of these attributes yields the uncertainty principle as shown below.

$$\Delta E = \left( 10^{19} \text{ GeV} \times 10^9 \text{ eV} / \text{GeV} \right) / \left( 1.6 \times 10^{19} \text{ eV} / \text{J} \right) = 0.6 \times 10^9 \text{ J} \tag{5}$$

$$\Delta t = 10^{-43} \text{ s} \tag{6}$$

Multiplying the above equations

$$\Delta E \times \Delta t = 0.6 \times 10^{19} \text{ J} \times 10^{-43} \text{ s} = 0.6 \times 10^{-34} \text{ J.s} \quad (7)$$

This yields Heisenberg's Uncertainty, which is

$$\Delta E \times \Delta t \geq 0.5 \times 10^{-34} \text{ J.s} \cong \frac{\hbar}{2} \quad (8)$$

It is difficult to understand the mechanics behind this coincidence.

In my theory, I do not have to express the range of nuclear force as "short" with an unanswered question as to *precisely* how short. The difference between the two large dynamic numbers of proposed strong gravity and the proposed repulsive Yukawa force may be responsible for the observed short range, short enough to fix the size of the nucleus.

The values of a field and its rate of change with time are like the position and velocity of a particle. This modification meets the uncertainty principle requirement that the field can never be measured to be precisely zero. The sudden drop in potential at the edge of nucleons may be due to pion intervention and other complex phenomena.

## THE EARLY UNIVERSE

If God created the universe from nothing, my theory shows that mass energy on one side of the throat of the quantum wormhole is equal to the gravitational field energy on the other side of its throat, both canceling each other. This would imply that the gravitational field is negative energy considering that mass is positive energy. This is consistent with inflationary universe, no matter how big is the universe. "There is nothing known that places any limit on the amount of inflation that can occur while the total energy remains exactly zero [18]." My paper does not explain the observations of quark confinement, their asymptotic freedom and infrared slavery. It need not. These observations are results of gluon interactions. My theory deals with the tensor field alone and stops at the mouth of the quantum wormhole.

There is a coincidence that estimated number of gluons (about a billion) per nucleon is the same as the estimated number of photons per nucleon. Despite difference between their energies, this potential one-to-one relationship is noteworthy in light of the facts that (1) the energy difference may be explained in terms of violation of null energy condition



and (2) the photon is speculated as a potential mediator of gravity by some scientists, trying to reconcile repulsive gravity implicit in the expanding universe.

### **BIOLOGICAL IMPLICATION**

Darwin, in the concluding remark of his text, *On the Origin of Species* (1859), referred to "the fixed law of gravity", which implies an assumption that the gravitational constant and the Newtonian the inverse square logic are potentially fixed. Therefore, they cannot influence evolution. My substantiation of the Dirac's Large Number Hypothesis (LNH) (In version 1 of <http://www.arXiv.org/pdf/physics/0210040>) predicting the decreasing value of gravitational constant theorizes that all coupling constants are increasing with time. This is also backed by the recent observations. Consequently, it illogical that the orderly increase of coupling constants imparts an orderly influence on mutations assumed uninfluenced otherwise. This orderly influence is unidirectional, clearly in the direction of increasing intelligence, looking at the evolutionary history, whether or not in the sense of a religion. On the horizon, I see that the order in gravitation is linked to the order in entropy as well [23].

### **PREDICTION**

My modification provides a consistent, intuitive and simplistic, but mathematical explanation of the observed relative values of coupling constants, something no other theory has done. If a theory explains observations, it need not predict. Experimentally, my theory may be explored by a careful examination of the nuclear force at distances above 10 fm. My theory predicts that the measured range of the nuclear forces will keep on increasing as the accuracy of measurement keeps on increasing. It is possible that the relationship between the weak nuclear force and electromagnetic force is analogous to the relationship between the strong force and gravitation more clearly presented here. Recently published test results verified the gravitational inverse square law down to  $218\mu\text{m}$  [19]. The test results do not verify the higher dimensional theories that motivated the test, but they are not in conflict with my theory, as at these separations my modified force should be indistinguishable from Newtonian gravity. The generalized equation in the conclusion predicts a string coupling constant of  $(10^{-35})^2 = 10^{-70}$  [12].

If the predictions are known, they do not defy the theory if they can be explained as consequences of the theory proposed. Pions are believed to cause attractive nuclear force. All fermions may be wormholes with quantum mouths communicating with the rest of the universe. My theory gives a reason to think that pions may be creating a repulsive force instead of attractive force. Yukawa was looking for the explanation of force believed to be

attractive. Quantitatively, Yukawa coupling does not explain the observations of strong coupling. The assumption of gravity as a separate fundamental interaction is questionable.

Since the spin dependent nuclear forces could be attractive as well as repulsive, the gravity must contain a small repulsive component at microscopic scale. Combining this with observations of expanding universe results into a significant possibility that gravity is not ideally attractive throughout its entire range.

The assumption that gravity is fundamental interaction should be revisited, considering that almost a century of work and associated expenses cannot unify gravity. This paper shows the opposite. My theory consistent with the views of Einstein [21] and Rutherford [22], the giants associated with gravity and nuclear force respectively, should not be considered an alternate theory. Some health related biological issues potentially involving the cause of cancer maybe better understood with an open mind to revisit the basis of the prevailing views. On the horizon I see that my theory potentially throws light on many such issues, obligatory to fundamental physics.

## CONCLUSION

In summary, in the early part of last century, when the nuclear force was declared to be a separate force, the Planck length and its implications were not well understood. Planck's system of fundamental units was considered heretical until came the proposal by Peres and Rosen [20]. The weakness of gravity was unquestioned. Therefore, it was impossible to explain strong gravity force in terms of Newtonian gravity and Einstein's view was undermined. I have explained why gravity is weak at long range and also raised a question: Is it weak at short range? Conceptual methods can now be used to grasp the strong side of gravity proposed mathematically by Einstein in 1919.

In light of my article this issue needs to be revisited. My consistent results show that strong gravity creates an illusion of a different force between nucleons. Mathematically, the strong force coupling constant  $C_S = D^2$ , where  $D$  = nucleon diameter in Planck lengths.

## ACKNOWLEDGEMENTS

I thank the staff at the Physics Department, University of Notre Dame for comments.

## REFERENCES

- [1] Feynman, R., *Six Easy Pieces*, Perseus Books Group, Cambridge, Massachusetts (1995).
- [2] Goradia, S.G., "Potential Link: Gravity and Nuclear Force," physics/0210040 (2002).
- [3] Goradia, S.G., *Indian Journal of Theoretical Physics* **52**, 143(2004).
- [4] Shrivastava, S.K., *Aspects of Gravitational Interactions*, Nova Science Publishers, Commack, New York (1998).
- [5] Hawking, S., *On the Shoulders of Giants*, Running Press Book Publishers, Philadelphia, PA (2002).
- [6] Wilczek, F., *Physics Today* **54**, 12(2001).
- [7] Morris, M.S. and Thorne, K.S., *Am. J. Phys.* **56**, 395(1988).
- [8] Visser, M., "Quantum Wormholes," *Physical Review D* **43**, 402 (1991).
- [9] Einstein, A. and Rosen, N., *Phys. Rev.* **48**, 73 (1935).
- [10] Visser, M., *Lorentzian Wormholes, From Einstein to Hawking*, Springer-Verlag, New York, New York (1996).
- [11] Feynman, R., *Acta Phys. Pol.* **24**, 697(1963).
- [12] Penrose, R., *The Road to Reality: A Complete Guide to the Laws of the Universe*, Jonathan Cape, London (2004).
- [13] Hawking, S.W., *Phys. Rev. D* **46**, 603(1992).
- [14] Hawking, S. W., *Nuclear Physics* **B335**, 155(1990).
- [15] Robson, B. A., "Relation between Strong and Weak Isospin," *International Journal of Modern Physics E* **13**, 999-1018(2004).
- [16] Yang, C. N., and Mills, R. L., *Phys. Rev.* **96**, 191 (1954).
- [17] *The problem of Particle Types and Other Contributions to the Theory of Elementary Particles*, PhD thesis, Cambridge University (Unpublished).
- [18] Guth, A.H., *Phys. Rev. D* **23**, 347(1981).
- [19] Hoyle, C.D., *et al.*, *Phys. Rev. Lett.* **86**, 1418(2001).
- [20] Peres, A. and Rosen, N., *Phys. Rev.* **118**, 335(1960).
- [21] Cao, T.Y., *The conceptual foundation of quantum Field theory*, Cambridge University Press, London, (1999).
- [22] Pais, A., *Inward Bound: Of Matter and Forces in the Physical World*, Oxford University Press, New York (1986).
- [23] Goradia, S. G., American Physical Society, April Meeting 2006, (abstracts submitted).

## لماذا التناقل بهذا الضعف؟

شنتال جوراديا

معهد بحوث التناقل، أنديان، الولايات المتحدة الأمريكية

لماذا ضعف التناقل؟ يطرح كثيراً هذا السؤال وبعد عقود من العمل المضني لا نملك إجابة واضحة. و بالنظر لهذه الحقيقة. وفيما يلي من صفحات سيتبين لنا أن هناك أسباباً للتفكير أن التناقل هو قوة مركبة تتكون من ظواهر طويلة المدى للقوي النووية قصيرة المدى والتي هي من الضعف ليكن قياسها عند مدي طويل أو متوسط المعجلات التصادمية للجسيمات وهذا يتفق مع فرضية أينشتين المقترحة عام ١٩١٩.